

## Electroplated Finishes on Brass as the Base Metal

These colours are indicative only, subject to limitations in the printing process.



**Polished Chrome Plate/PCP** Layers of bright nickel and chrome on a polished surface.



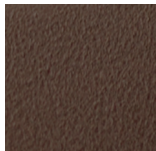
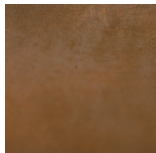
**Satin Chrome Plate Velvet/SCPV** Layers of satin nickel and chrome on a polished surface.



**Satin Chrome Plate Brushed/SCPB** Layers of bright nickel and chrome on a brushed surface. This finish is not recommended for marine or corrosive atmosphere situations.

Original  
finish

Examples of  
natural patinas  
which occur  
over time



## Brass Base Metal and “Living” or “Patina” Finishes through Electroplating of the Brass.

Note: Shade variations may occur during manufacture and in matching new hardware to existing products already in use.

**Copper Plate/COP** A thick copper layer plated onto the brass base metal, left uncoated, which will acquire a rich red-brown patina over time.

**Weathered Copper/WCOP** A thick copper layer plated onto the brass base metal, then bead blasted and ‘aged’ to a matt red-brown colour, which will continue to evolve a natural patina over time.

**Satin Nickel Plate/SNP** A layer of satin nickel on a polished surface. It will oxidise to a minor degree over time, please refer to additional information on the following page.

**Polished Nickel Plate/PNP** A layer of nickle on a polished surface. This may oxidise slightly over time depending on atmospheric conditions.

**Brushed Nickel/BN** Two different layers of nickle on a fine brushed surface. This finish has excellent wear characteristics and has the appearance of Stainless steel. This may oxidise slightly over time depending on atmospheric conditions.