

Original finish

Examples of natural patinas which occur over time



Brass Base Metal and “Living” or “Patina” Finishes through Oxidisation of the Brass.

Note: Shade variations may occur during manufacture and in matching new hardware to existing products already in use.

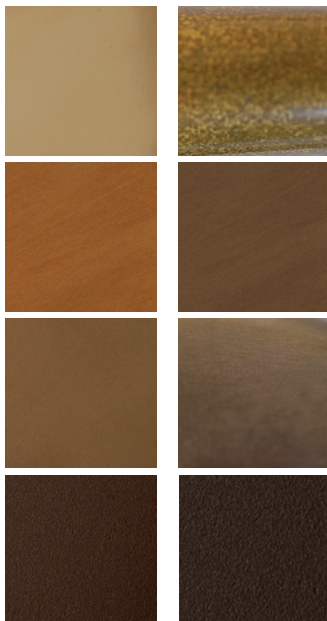
Weathered Brass/WB A bead blasted surface on brass, then aged to provide a light, matt brass surface. The colour of this finish will also continue to evolve over time.

Weathered Brass Dark/WBD A bead blasted surface on brass, then aged to provide a dark, matt brass surface. The colour of this finish will also continue to evolve over time.

Polished Brass Uncoated/PBU This will need polishing with proprietary metal cleaners to maintain the surface, or left to age naturally to a yellow-brown patina.

Original finish

Examples of natural patinas which occur over time



Bronze Base Metal and “Living” or “Patina” Finishes through Oxidisation of the Bronze.

Note: Shade variations may occur during manufacture and in matching new hardware to existing products already in use.

Polished Bronze/PBZ This will age naturally and develop its own patina over time depending on the prevailing climatic conditions and wear patterns with use. The ultimate finish will be a rich semi-gloss bronze patina surface, often showing the random grain structure of the bronze.

Satin Bronze Aged/SBZA The surface is satin finished by brushing and aged to provide a dark matt bronze surface. The colour of this finish will, over time, adjust to its own natural satin patina depending on the prevailing climatic conditions and wear patterns with use.

Weathered Bronze/WBZ A bead blasted surface on bronze, then aged to provide a light, matt bronze surface. The colour of this finish will also continue to evolve over time.

Weathered Bronze Dark/WBZD A bead blasted surface on bronze, then aged to provide a dark, matt bronze surface. The colour of this finish will also continue to evolve over time.