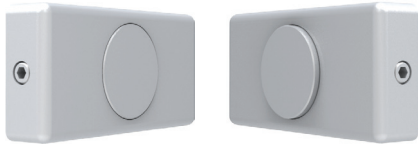


## Bifold Magnetic Catch 3223



Height 25mm  
Width 50mm  
Combined projection 21mm

A steel button and disc are mounted into the brass blocks, with a magnet inserted behind the flush disc.

These are grub screw fixed onto collars for a semi concealed fixing.

## Pro Magnet Catch 3228

Diameter 22mm

