

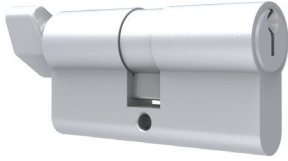
Cylinders

All key cylinders have a C4 profile.

Model Length

Profile Cylinders and Turns

1201	- 5 pin	62mm
1202	- 6 pin	70mm
1203	- 5 pin	76mm
1203a	- 5 pin	80mm
1204	- 5 pin	90mm



Profile Cylinders and Turns



Profile Double Cylinders



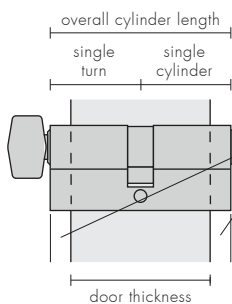
Profile Single Cylinders

Profile Double Cylinders

1211	- 5 pin	62mm
1212	- 6 pin	70mm
1213	- 5 pin	76mm
1213a	- 5 pin	80mm
1214	- 5 pin	90mm

Profile Single Cylinders

1221	- 5 pin	31mm to door centreline
1222	- 6 pin	35mm to door centreline
1223a	- 5 pin	40mm to door centreline



Remember to allow for the protrusion of the cylinder or turn for the lever handle back plate, 12.5mm, or escutcheons -7mm or 9mm. Refer chant™ Escutcheons in Accessories Section for thicknesses.

Cylinder and Turn Options:

Refer to following diagram to calculate overall length required, based on thickness of door added to thickness of back plate(s) and/or escutcheon(s).