

A.

Tubular Privacy Bolts

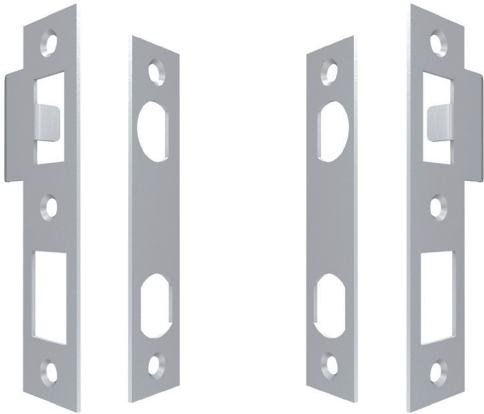
This range of tubular privacy bolts are of robust construction and have separate stainless steel or brass faceplates. The brass faceplates and strikes can be finished in our range of electroplated and aged brass finishes. Lever handle rotation is 30 degrees with a multiplier mechanism to withdraw the latch bolt. Supplied complete with strike boxes.

Spindle size is 5mm.

A. Privacy Bolt. Hub size is 5mm ($\frac{3}{16}$ " square)
 1187 60mm Backset
 1188 70mm Backset

1193a

1193b

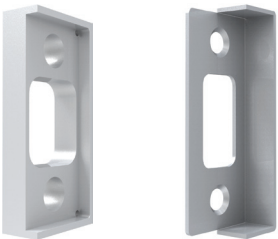


B.

B. Combination Faceplate and Strike. 1193a/b
 – Strike size 28mm x 124mm
 – Face Plate size 25mm x 114mm
 The spacing of the Tubular Latch and Privacy Bolt is 57mm ($2\frac{1}{4}$ ").
 For details on handing, refer to previous pages.

C. Deadbolt Rebate Kit, 1174

1174



B.

Product Finishes

Stainless Steel Brushed	SSB
Stainless Steel Polished	SSP
Stainless Steel Satin	SSS
(Bead Blasted Surface Similar to Satin Nickel)	
All Electroplated Finishes and Brass "Living" Finishes	
– See Finishes Section	