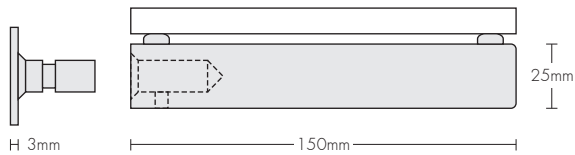
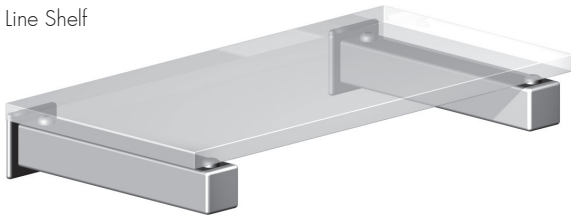


Line Shelf



Line and Curve Shelf Brackets

Designed to complement the Line and Curve ranges of door handles.

The mounting brackets are 25mm (1") square and fix to the wall onto mounting collars. The square backplates are essential to prevent crushing of the wall surface and add support to the bracket.

The brackets are fastened to the mounting collars with socket set screws from the underside. These are no longer supplied with the glass.

Shelf Bracket Code Numbers

- 4650 Line pair of bracket assemblies
- 4660 Curve pair of bracket assemblies

Curve Shelf

