

Floor Door Stops



3202

Diameter at base 38mm
Projection 35mm

Fastened to the floor with 2 x woodscrews or, 2 x 6.0 or 6.5mm countersunk masonry anchors. The rubber insert is fastened by a hex cap screw from the rear.



3212

Square 32mm
Projection 35mm

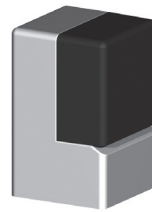
Fastened to the floor with 2 x woodscrews or, 2 x 6.0 or 6.5mm countersunk masonry anchors. The rubber insert is fastened by a hex cap screw from the rear.



3203

with 15mm Extension
Diameter at base 42mm
Projection 50mm

Fastened to the floor with 2 x woodscrews or, 2 x 6.0 or 6.5mm countersunk masonry anchors. The rubber insert is fastened by a hex cap screw from the rear.



3213

Square 32mm
Projection 50mm

Fastened to the floor with 2 x woodscrews or, 2 x 6.0 or 6.5mm countersunk masonry anchors. The rubber insert is fastened by a hex cap screw from the rear.



3206

Diameter at base 38mm
Projection 35mm

Fastened to the floor with 2 x woodscrews or, 2 x 6.0 or 6.5mm countersunk masonry anchors. The rubber insert is fastened by a hex cap screw from the rear.



3207

Diameter at base 38mm
Projection 50mm

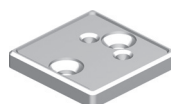
Fastened to the floor with 2 x woodscrews or, 2 x 6.0 or 6.5mm countersunk masonry anchors. The rubber insert is fastened by a hex cap screw from the rear.



Carpet Base 3209

Diameter 44mm
Height 6mm

Fastened to a carpeted floor first then fasten a 3202, 3206 or 3207 Floor Door Stop to it. The Carpet Base is secured to the floor with two screws on its centreline to keep it flat. the door stop then stays perpendicular to the door.



Carpet Base 3219

Square 38mm
Height 6mm

Fastened to a carpeted floor first then fasten a 3212 or 3213 floor door stop to it. The Carpet Base is secured to the floor with two screws on its centreline to keep it flat. the door stop then stays perpendicular to the door.