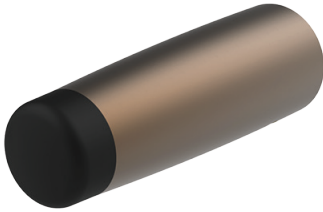


Door Stops - Wall Mounted

- Full hardware suite available
- Designed and manufactured in New Zealand
- Fixed using mounting collar & 10G screw
- Custom solutions available (surcharge applies)

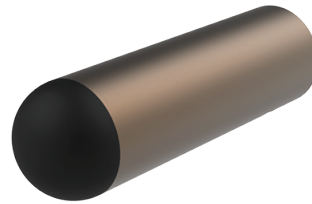
Round Taper



3201

Base Diameter - 25mm
Projection - 75mm

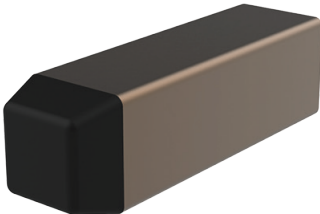
Round



3205

Base Diameter - 22mm
Projection - 75mm

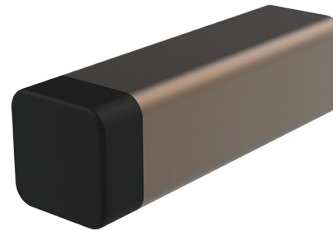
Square



3211

Base Square - 22mm
Projection - 75mm

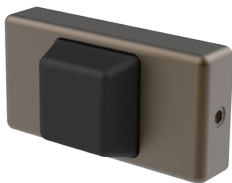
Marua



3215

Rubber Square - 22mm
Projection - 75mm

Bifold



3210

Rectangular - 25 x 50mm
Projection - 17.5mm