

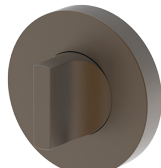
# Escutcheons - Low

Refer to the 'Escutcheon Technical' page for more detailed information including spindle options.

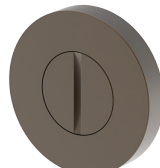
## Round



4800 - C2



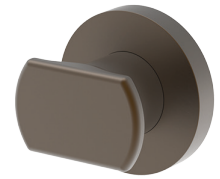
4811 - C2



4812 - C2



4803 - C2

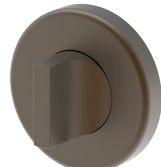


4815 - C2

## Cylinder



4800 - C



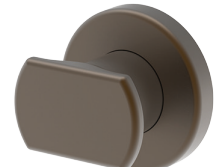
4811 - C



4812 - C

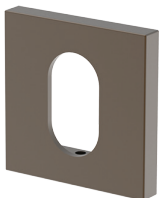


4803 - C

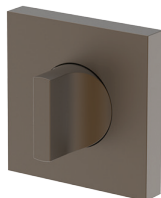


4815 - C

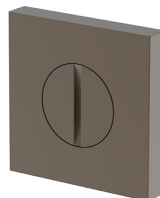
## Square



4820 - A



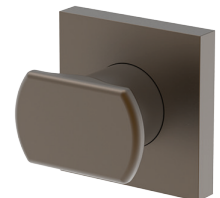
4831 - A



4832 - A



4833 - A

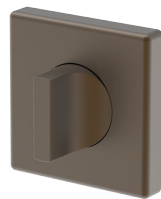


4835 - A

## Line



4820 - L



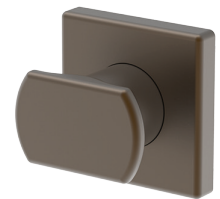
4831 - L



4832 - L



4833 - L

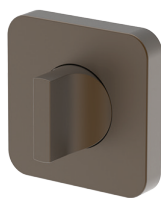


4835 - L

## Bella



4820 - B



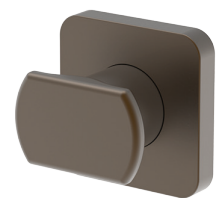
4831 - B



4832 - B

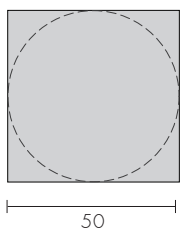


4833 - B



4835 - B

## Dimensions - Generic



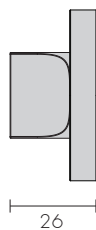
Oval / Euro Cylinder  
Grub screw fixes onto cylinder



E Turn



Thumb Turn\*



Pull Turn\*

