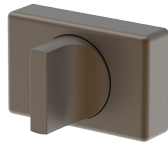


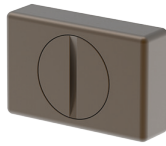
Escutcheons - Rectangle Horizontal

Refer to the 'Escutcheon Technical' page for more detailed information including spindle options.

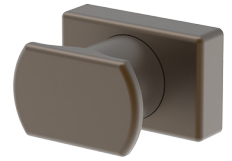
Line (32 x 50mm)



4861 - L



4862 - L

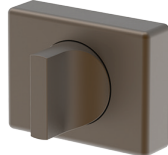


4865 - L

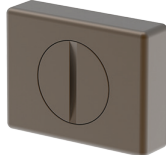
Line (38 x 50mm)



4870 - L



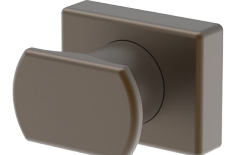
4871 - L



4872 - L

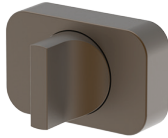


4873 - L

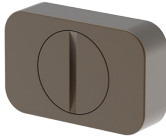


4875 - L

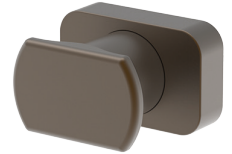
Bella (32 x 50mm)



4861 - B



4862 - B

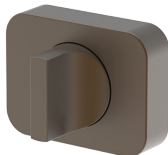


4865 - B

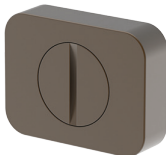
Bella (38 x 50mm)



4870 - B



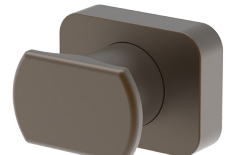
4871 - B



4872 - B

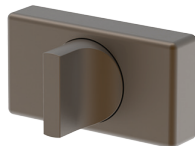


4873 - B

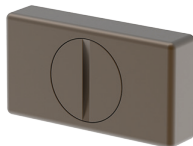


4875 - B

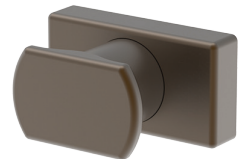
Line (32 x 60mm)



4881 - L



4882 - L

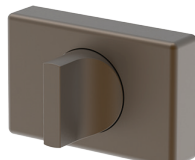


4885 - L

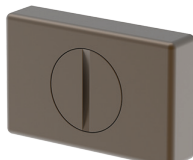
Line (38 x 60mm)



4890 - L



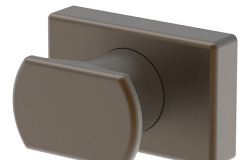
4891 - L



4892 - L



4893 - L



4895 - L

Dimensions - Generic

Oval / Euro Cylinder
Grub screw fixes onto cylinder

E Turn

Thumb Turn*

Pull Turn*

