

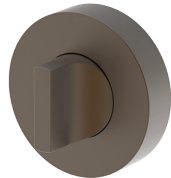
Escutcheons - Round

Refer to the 'Escutcheon Technical' page for more detailed information including spindle options.

Round



4800 - C2



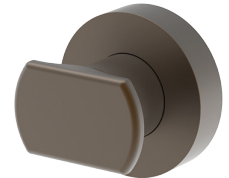
4801 - C2



4802 - C2



4803 - C2

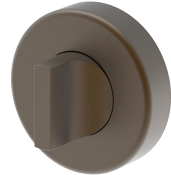


4805 - C2

Cylinder



4800 - C



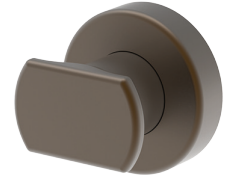
4801 - C



4802 - C



4803 - C

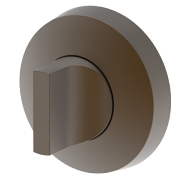


4805 - C

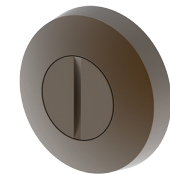
Facet



4800 - F



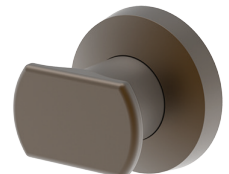
4801 - F



4802 - F



4803 - F

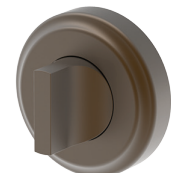


4805 - F

Traditional 2



4800 - T2



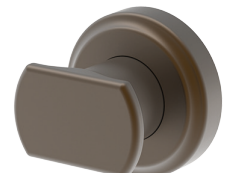
4801 - T2



4802 - T2

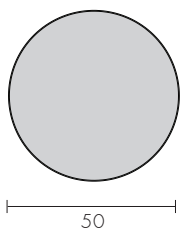


4803 - T2



4805 - T2

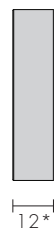
Dimensions - Generic



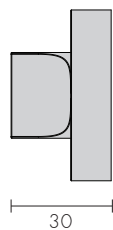
Oval / Euro Cylinder
Grub screw fixes onto cylinder



E Turn



Thumb Turn*



Pull Turn

