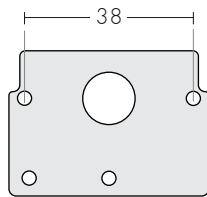
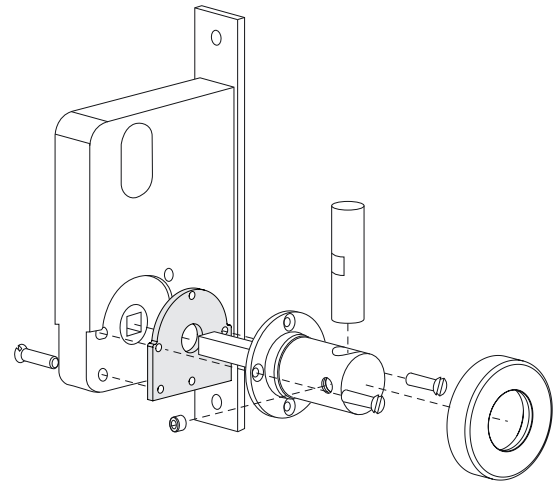


## Pull Turn Attaching Plates

These Attaching Plates are used to fasten a Pull Turn onto a single action mortise lock on the inside of a door with key entry.

Example shown is of the assembly of a Pull Turn mounted onto a Legge 990 Lock using an Attaching Plate 495-1. Refer to the Pull Turns in Escutcheons.

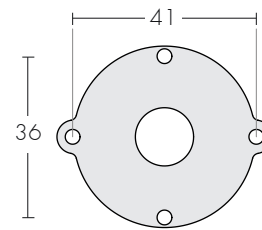


### 495 - 1

For Legge 990 Series Mortise Lock

The plate is attached to the lock body with one screw in the bottom corner. It brings the width of the lock case to a nominal 22mm wide, the width of a standard mortise for that lock. When the lock is installed, the plate is against the inside of the mortise. When the handle is fastened to the plate, the door is sandwiched between them.

The fastening screws protrude into the lock case.

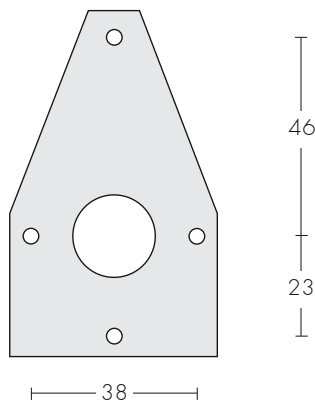


### 496 - 1

For Lockwood 3500 Series Mortise Lock

The plate fits into the recess on the appropriate side of the case and is retained in the recess with double sided tape. It also brings the nominal width of the case to 22mm.

When using this plate, the screws holding the pull turn to the plate must be cut to the correct length so that the screws do not go beyond the plate, and push into the lock case.



### 497 - 1

For SAB and similar Mortise Lock

The plate is attached to the lock body with two screws at the top and bottom of the plate. When the pull turn is fastened to the plate, the door is sandwiched between them. The fastening screws protrude into the lock case.