

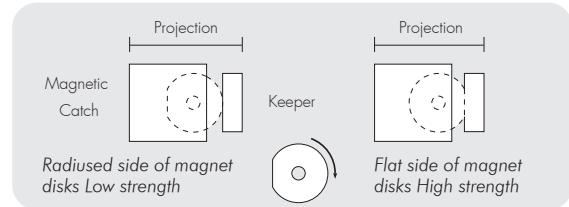
Magnetic Catch - Floor & Wall Mounted

This product features a spring loaded magnet housing which when rotated provide two different hold back strengths.

The magnet housing has both a 'round' and 'flat' face which offer greater adhesion to the striker plate depending on the force required. For example an oversize front door may require more holding force than an internal office door. The steel discs are mounted on a spindle with flats on each end that allow top and bottom springs to rest against. These springs provide cushioning as the door comes into contact with the keeper.

The steel magnet discs are electroless nickel and then duplex nickel coated for added service life outdoors, however to prolong the life of the magnet housing it should be periodically removed (along with springs) and cleaned with WD40 or CRC.

One use of a magnetic door stop is as a hold back function on an exterior door. Therefore, wind loadings play an important role in their performance.



Floor Mounted

Fastened using 2 x Woodscrews or, 2 x CSK Masonry anchors.

Square



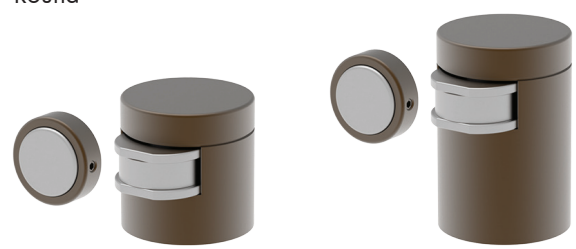
3221

Base Square - 38mm
Projection - 54 or 57mm
Height - 40mm

3222
Extended

Base Square - 38mm
Projection - 54 or 57mm
Height - 60mm

Round



3226

Base Diameter - 40mm
Projection - 56 or 58mm
Height - 40mm

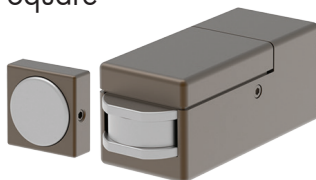
3227
Extended

Base Diameter - 40mm
Projection - 56 or 58mm
Height - 60mm

Wall Mounted

Fastened using 2 x 8G Screws

Square



3220
Extended

Square - 32mm
Projection - 86 or 88mm

Keeper

Square



Square - 25mm
Projection - 9mm

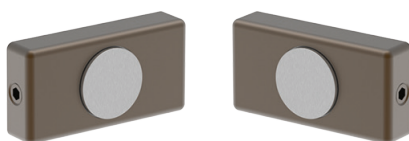
Round



Diameter - 27mm
Projection - 9mm

Magnetic Catch - Bifold

Semi concealed fixed



3223

Width - 25mm
Height - 25mm
Projection - 21mm (Combined)

Magnetic Catch - Concealed

3228
3228a HD Version

