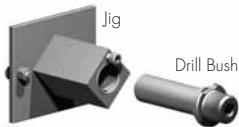


chant™

Jigs and Accessories

Tubular Latch Drill Jig
6020



For a 24mm Auger Drill.
Clips into the Faceplate Routing Jig.
Drill Bushes
6021 Ø10mm
6022 Ø12mm
6023 Ø19mm
Drill bushes slide into the Tubular Latch Jig for drilling specific hole sizes. Can be used with a 10mm diameter extended drill, to cross drill through the door for a power transfer cable for an electric lock.

Drill Jig
6026



Tubular Latch/Privacy Bolt Drill Jig for Baton Latch and Bolt.
Uses 25mm Auger Drill
Hole centres are 57mm (2¼").

Auger Drills
6027 Ø24mm x 300mm
6029 Ø25mm x 300mm

Tubular Latch Drill Jig
6028



For a 25mm Auger Drill

Tubular Latch/Privacy Bolt Drill Jig for Baton Latch and Bolt
6030



Clips into the Faceplate Routing Jig.

Uses Drill Bit 6037-1 or 6037-2
1" diameter drill bit. (Templaco).

Hole centres are 57mm (2¼").

Baton Faceplate Template



6030-1
57 x 25.4mm (2¼" x 1")
(Baton Faceplate)

6030-2
114 x 25.4mm (4½" x 1")
(Baton, Combo Faceplate)

Clips into the Faceplate Routing Jig.

Baton Strike Templates



6030-3
70 x 28mm (2¾" x 1⅜")
(Standard Strike)

6030-4
124 x 28mm (4⅞" x 1⅜")
(Baton Combination Strike)

Clips into the Strike Plate Jig.

Drill Guide 6035



Used to provide 9.5mm (⅜") pilot holes, drilled from each side of the door for 60mm (2⅜") and 70mm (2¾") backset tubular latch and privacy bolt. These fasten onto the vertical bars on the faceplate routing jig.

Hole Saw 6036



54mm (2⅛") diameter hole saw with 9.5mm (⅜") drill to saw hole through the door. It is recommended to drill into the door part way from one side, and then drill from the other side to complete the hole. Using this hole saw, a 46mm plug is removed from the door with minimal sawdust. This avoids the total conversion of the wood removed to sawdust and chips when using a Forstner or similar bit.

Drill Bits



1" drill bit (Templaco).

6037-1 High Speed Steel Drill Bit
6037-2 Carbide Tipped Drill Bit

Vertical Locating Clamp
6040



The underside of the locating clamp is positioned at the Machine Setting Height (MSH) established to locate the Lock Mortising Machine and the Face Plate Routing Jig, which are located against the underside of the Locating Clamp.

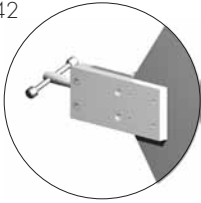
The clamp can also be used to locate the Universal Jig 6043 when used to machine a door for flush pulls at the same height on both sides of the door.
Max door thickness: 80mm.

Strike Plate Jig
6041



This jig clamps to the door jamb for routing of strike plates. It is adjustable left to right on the jamb to locate the template guide to position the strike plate for correct latching. This jig also allows for the use of an additional template to rout for the strike box (dust bucket) while the jig is set on the door. The adjustable clamping arrangement on this jig allows it to be used on door jambs with square faces, with or without draught seals, it is not suitable for doors with radiused architraves.
Template size: 240 x 100mm.

Jamb Extension Bar
6042



Extends the clamp on the strike plate jig for wide door frames or jambs.

Universal Jig
6043



Adjustable backset.
Used for: Flush Pulls, Privacy and Locking Flush Pulls, Extended Flush Sliding Bolts, Combination Pulls/Bolts.
Adjustment of the jig from the door edge to centreline of the template is 40 – 68mm (1 1/2" – 2 1/16").
Template size: 280 x 100mm.
Max door thickness: 80mm.

Flush Sliding Bolt Jig
6044



This jig is generally used on the top or bottom edges of the door to rout for a chant™ or similar sliding flush bolt. This jig can also be used with appropriate templates to prepare a door for Sun Valley Bronze gate latches. Clamped to the edge of the door, up against the 6040 Vertical Locating Clamp, routing can be done on one side of the door. Then the jig is removed, rolled over, and clamped on the opposite face up against the Vertical Locating Clamp, the template changed for the different routing detail and routed.
Template size: 280 x 100mm.
Max door thickness: 80mm.

Edge Jig
6045



Used to rout the vertical edge of the door for chant™ 1500 Edge Pulls. Also used to rout the guide plate recess on the top and bottom of a door for chant™ 2031, etc., Flush Sliding Bolts and Tubular Latch Faceplates that need to be positioned close to the leading edge of the door.
Template size: 120mm x 50mm
Jig length: 200mm
Max door thickness: 80mm

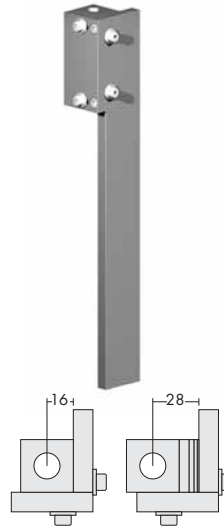
Edge Jig fitted to the top of a door with template inserted.

Drill Guide
6045-1



To drill for a Pull Latch with a 25mm auger drill. Fastens to the face of the 6045 Edge Jig.

Sliding Bolt, Rod Drill Jig
6046 Ø12.7mm (1/2")
6048 Ø10mm



This jig is used to drill up or down the door for the operating rod of a chant™ Sliding Bolt or to drill a hole across the door for power transfer cables. Drill guide sizes are 12.7mm (1/2") or 10mm diameter. A range of packing shims is provided (1, 2, 3 and 6mm). These pack the drill guide block from 16mm (5/8") from the door face, with no packers, to 28mm (1 1/8") from the door face. Clamp the jig to the door with standard sliding or "G" clamps.

Extended Drill
6046-1
6046-2
6048-1

Ø12.7mm (1/2") x 600mm (24")
Ø12.7mm (1/2") x 1000mm (39")
Ø10mm x 1000mm (39")

Strike Plate Jig
6047



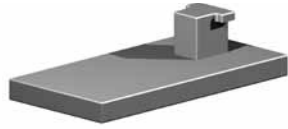
For use on door jambs with radiused architraves where Strike Plate Jig 6041 will not clamp. This jig is positioned and nailed to the jamb.

Corner Chisel
6057



Fits 25.4mm (1") wide faceplate recesses. Used to chisel the radiussed corner left by the Faceplate Router Cutter into a square corner.

Lock Mortising Machine Stand
6058



The bottom clamps on the mortising machine hook under the protrusions on the base block, and are clamped to the block so that the machine stands erect for servicing or changing cutters.

Template Box
6059



Stores standard templates, 100mm x 280mm, for easy sorting and retrieval. Aluminium base plate machined with 24 slots allows templates to lean in either direction, allowing easy viewing of the template number and product description. Carry handle folds down for access to the templates.

