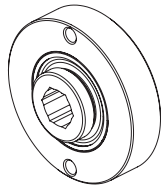
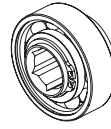


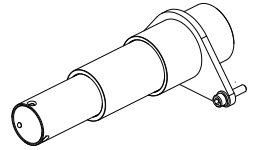
Clamp Tri Knob
6300



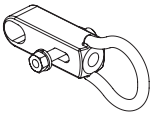
Bearing Housing Assembly
6301 Assembly
6301-1 Housing Only



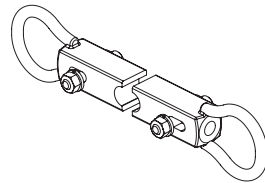
Bearing & Follower Guide
6301-2 Bearing & Follower
6301-3 Bearing
6301-4 Follower



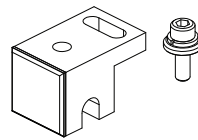
Router Sleeve Assembly
6302



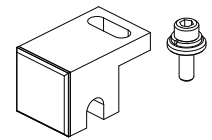
Clutch Nut Assm
(Includes nut, bolt & spring)
6304



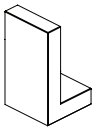
Double Clutch Nut Assm
(Includes nuts, bolts & springs)
6305



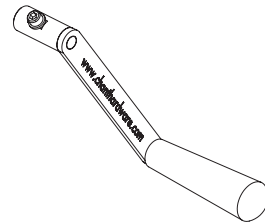
Centering Block - TOP
6306-1



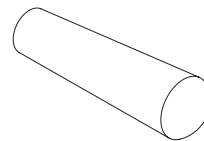
Centering Block - BTM
6306-2



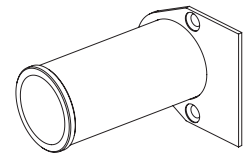
Height Locating Angle
6307



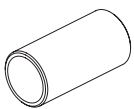
Crank Handle Assembly
6308



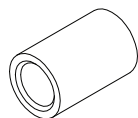
Crank Handle Grip
6308-1



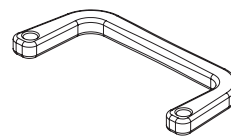
Vacuum Tube
6309



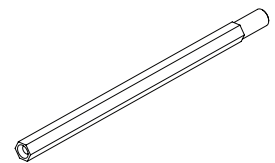
Vertical Guide Bush
6310



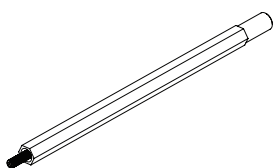
Feedscrew Guide Bush
6311



Lifting Handle
6315



Router Shaft - Female
6060 - F



Router Shaft - Male
6060 - M