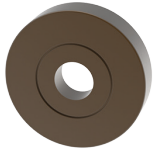


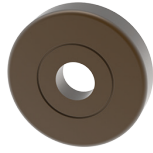
Chant Rose - Standard

- Range of styles available
- 38 or 41mm fixing centers available
- 12.5mm in projection
- 57mm in Diameter/Square

Note: Some lever styles are restricted in the applicable rose types. For eg. the Line 691 levers require rose types with the internal square cover detail.



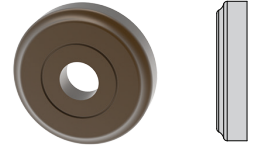
Round (C2)
A Edge Detail



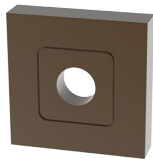
Cylinder (C)



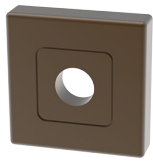
Facet 2 (F2)



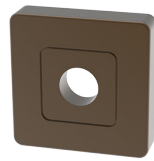
Traditional 2 (T2)



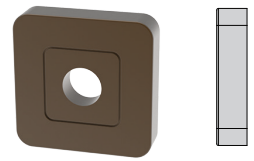
Square 3 (S3)
A Edge Detail



Line (L)



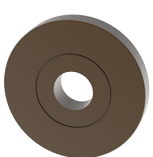
Marua (M)



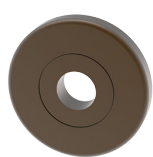
Bella (B)

Chant Rose - Low

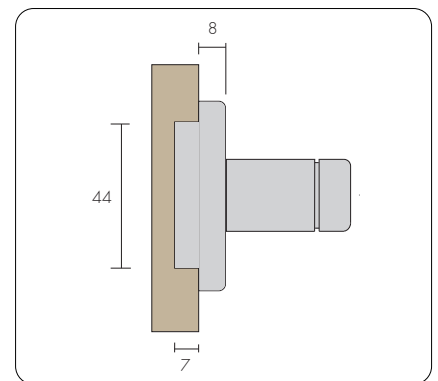
- Range of styles available
- 38mm fixing centers only
- 8mm door face projection, 7mm base projection
- 57mm rose Diameter/Square, 44mm base diameter



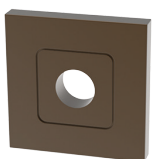
Round Low (C2 - W)
A Edge Detail



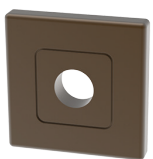
Cylinder Low (C - W)



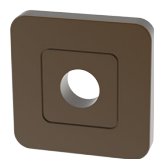
Low roses require a section of the mechanism to be recessed below the door surface.



Square 3 Low (S3 - W)
A Edge Detail



Line Low (L - W)



Bella Low (B - W)