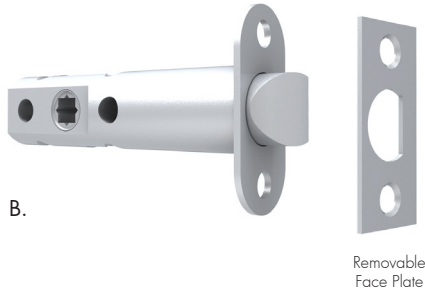


A.



B.

Removable
Face Plate

Tubular Latches

This range of tubular latches are of robust construction and have separate stainless steel or brass faceplates. The brass faceplates and strikes can be finished in our range of electroplated and aged brass finishes. Lever handle rotation is 30 degrees with a multiplier mechanism to withdraw the latch bolt. Supplied complete with strike boxes.

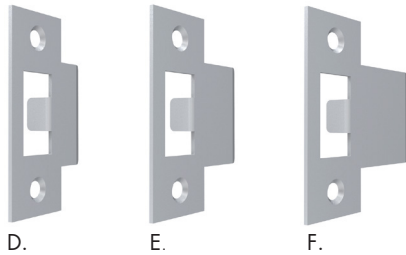
Spindle size is 8mm.

A. Tubular Latch – Standard

1181 60mm backset
1182 70mm backset

B. Tubular Latch – Horizontal Fixing. For use with lever handles with horizontal fixing only, ie Chant Line 5012 and Curve 5052 handles etc., 38mm centres.

1183 60mm backset
1184 70mm backset



D.

E.

F.

Strikes

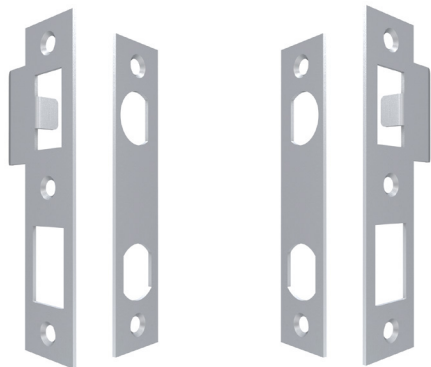
D. Standard strike 1190. 70mm x 28mm
Centreline to lip bend is 24mm
(Supplied as standard with latches and incl. strike box)

E. Extended Strike 1191. 70mm x 28mm
Centreline to lip bend is 33mm

F. Extended Strike 1192. 70mm x 28mm
Centreline to lip bend is 45mm

1193a

1193b



G.

G. Combination Faceplate and Strike. 1193a/b
– Strike size 28mm x 124mm
– Face Plate size 25mm x 114mm
The spacing of the Tubular Latch and Privacy Bolt is 57mm (2 1/4").
For details on handing, refer to previous pages.

H.1175 Tubular Latch Rebate Kit (suitable for Baton latches)

A. 'T' Strike
B. 'D' Strike

1175



H.

A.

B.

Product Finishes

Stainless Steel Brushed	SSB
Stainless Steel Polished	SSP
Stainless Steel Satin	SSS
(Bead Blasted Surface Similar to Satin Nickle)	
All Electroplated Finishes and Brass "Living" Finishes	
– See Finishes Section	