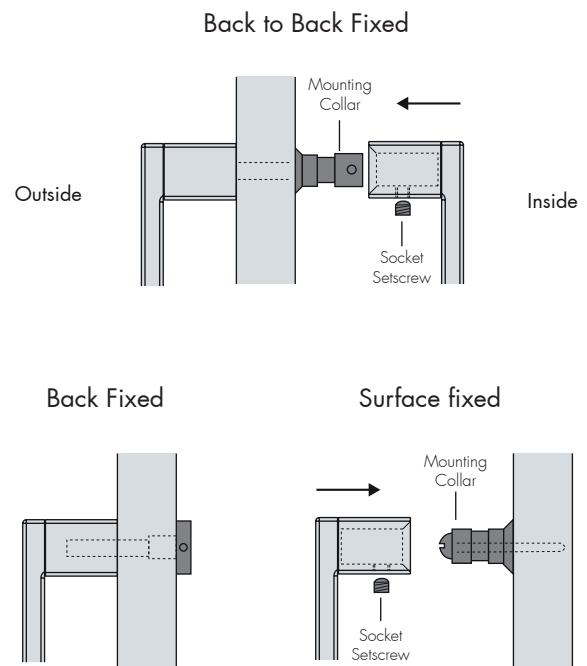
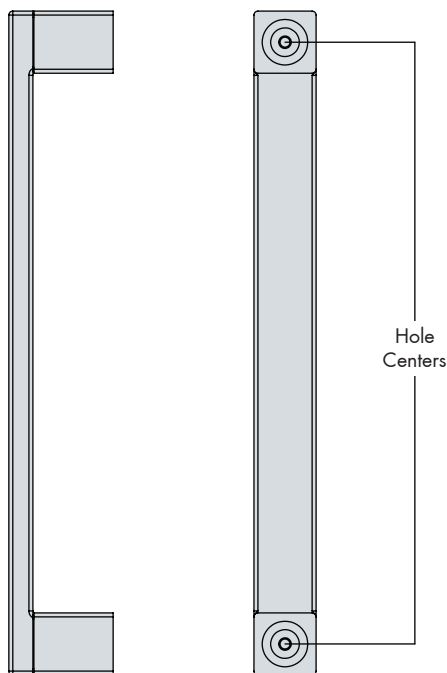


## Installation Instructions

### Pull Handle Mounting



## Mounting Options

### A - Mounting Option 1, Back to Back Handles

1. Select the position on the door where the handle is to be mounted.
2. Mark out the hole position on the outside of the door to suit the mounting pillar positions.
3. Transfer those marks horizontally around the door to the inside surface and the same distance from the edge. Allow for any bevel on the front edge of the stile.
4. Drill from both sides of the door 6.5mm diameter (1/4") and clear the hole through. Drilling from both sides avoids splintering of the door surface if drilling only from one side.
5. Trim mounting studs to length. Insert the stud through the door and allow 12 –15mm protruding to screw into the handle. Saw the stud to length and deburr the end of the thread so that it screws easily into the handle.
6. Fasten the outside handle to the door, just nipping the mounting collars. Slide the inside handle onto the collars which will help to align them correctly. Remove the handle and tighten the collars with the hex key provided. Replace the inside handle onto the mounting collars and tighten the set screws firmly.

### C - Mounting Option 3 Surface fixed Handles

1. Mark out hole positions on one side of the door.
2. Drill a pilot hole for the mounting screws to suit the door material.
3. Screw the mounting collars to the door with the Stainless steel screw provided.
4. Fasten the handle to the door and tighten the screws firmly.

### B - Mounting Option 2, Back Fixed Handles

1. Mark out holes as above.
2. Drill as follows for the different fixing options;  
**Countersunk screw:** drill 6.5mm from each side them countersink the inside only to suit.  
**Dome screw:** drill 6.5mm from each side only.  
**Flat screw:** drill 9mm diameter X 8mm deep from the inside only, then drill 6.5mm from both sides.
3. Trim the mounting studs as in A5 above.
4. Fasten the handle to the door, . With the dome or flat screw use the hex key provided as the "spanner".

### D - Mounting Option 4. Combination Handles

1. Use a combination of instructions in A and C

### E - Glass Doors

1. The hole diameter in glass doors must be equal to the thickness of the glass as a minimum.
2. The size required for chant handles is 10mm, with minimal chamfer on the edges of the glass.
3. Glass door kits have plastic washers to go between the glass and handle pillars and sleeves to go inside the hole the glass.

# Installation Instructions

## Pull Handle Mounting

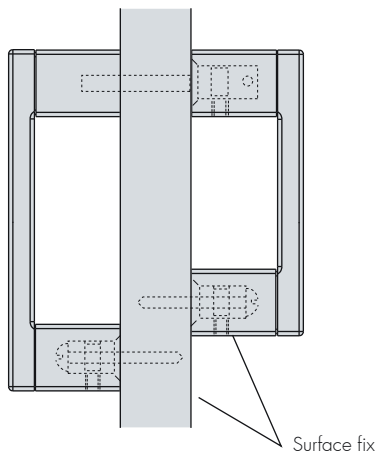
### D - Mounting Option 4

Combination Handles (Pairs of dissimilar handles)

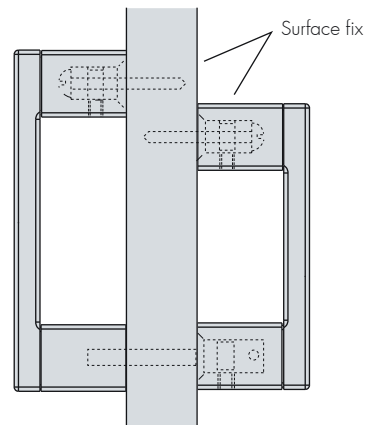
Used in situations where handles are necessary on both sides of a door, and a change in size is required from one side to the other.

Example: Large handle on the outside of a front door with a smaller handle on the inside for the entry foyer.

Top to Top, specify - TT



Bottom to Bottom, specify - BB



### Fastening options for back fixed handles

Countersunk slotted screw -  
M6 x 50mm



Dome Screw - For glass or wooden  
doors M6 x 75mm standard length  
supplied, OR specify door thickness.



Flat Screw - For aluminium or wooden  
doors M6 x 75mm standard length  
supplied, OR specify door thickness.

